

Needs During Recovery Period

1. Disaster resilient house construction

- 3 roomed house- US\$5,858
- VIP Latrine and bathroom- US\$1,191
- Waterpoint- US\$6,000
- Dissemination of Safer House Construction Guidelines- US\$18,000



Water Sanitation And Hygiene

Impact

- A total of 89,476 latrines collapsed at household level; 693 in schools and health facilities; and 460 in public spaces.
- 2,695 boreholes, and 37 gravity-fed water schemes collapsed.
- A total of 944,784 people are in need of WASH services due to the tropical cyclone Freddy.

Needs

- Water purification chemicals
- Purification buckets
- Water quality test kits
- Emergency toilets (movable and/temporary structures) bathing units and waste bins.
- Hygiene Soap, buckets, cleaning materials (brooms, mops), tarpaulins, disinfection material, PPE and IEC materials.
- Sanitation and hygiene promotion including hand washing facilities and menstrual hygiene packages.
- Repair/rehabilitation of damaged water sources.
- Rehabilitation of toilets to avoid infections and waterborne diseases.
- Reusable sanitary pads
- Pit emptying



Effects of Cyclone Freddy in Malawi



www.habitat.mw



Habitat for Humanity Malawi

Introduction

Cyclone Freddy made landfall in Malawi's Southern Region on 12th to 13th March 2023, bringing torrential rainfall causing devastating floods and mudslides in Southern Malawi. The cyclone was developed in the western Indian Ocean and moved eastwards over the southern part of Malawi. Following the heavy rains, multiple landslides, debris and flash floods events were reported in Blantyre, Thyolo, Zomba, Phalombe, Chiradzulu, Mulanje, Neno, Mwanza, Balaka, Machinga, Chikwawa and Nsanje Districts.

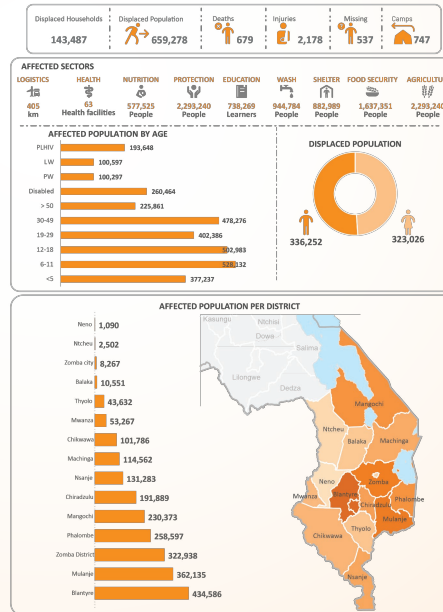
The devastating effects of the cyclone led to the declaration of a state of emergency by the state president, His Excellency Dr. Lazarus Chakwera, on 13th March 2023.

This report gives a snapshot of the effects of the cyclone on 2 sectors of shelter and Water Hygiene and Sanitation (WASH) which are the thematic areas of Habitat for Humanity Malawi.



Affected Population Summary

- 143,487 displaced households
- 659,278 displaced population
- 679 deaths
- 2,178 injuries
- 537 missing
- 747 camps



Affected Sectors

- Logistics - 405 Kilometers
- Health - 63 Health facilities
- Nutrition - 577,525 people
- Protection - 2,293,240 people
- Education - 738,269 learners
- Shelter - 882,989 people
- WASH - 944,784
- Food security - 1,637,351 people
- Agriculture - 2,293,240 people

Impacts And Needs Of The Shelter Sector

Impact

- 882,982 people's houses were affected with 659,278 moving to 747 camps
- There is insufficient lighting in the camps
- There is overcrowding in most camps, with people sleeping on the floors with only a few people having mats and beddings

Urgent Needs During Response Period Per Family

1. Response Emergency Shelter Kits (ESKs) such as:

- Tarpaulin (4mx6m)
- Family tents/big tents
- Plastic sheet
- Blankets
- Sleeping mats
- Transitional shelter

2. Response Non Food Items (NFIs)

- Blankets
- Sleeping mats
- Buckets
- Laundry soap
- Personal Hygiene soap
- Cooking utensils

NB: To support one family with ESKs and NFIs, it requires US\$347 and US\$79 respectively.